

超低待機電力型電源モジュール

SPM、EPM、BPMシリーズ



Power Supplies with Ultra-low Standby Power Consumption/Energy-saving Power Modules
SPM,EPM,BPM Series

特長/FEATURES

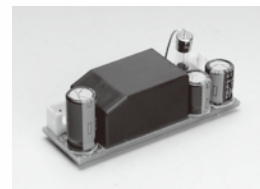
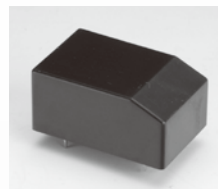
1. 少ない外付け部品により、容易に小型AC/DCの作成が可能
2. オープンショート試験、EMC対策等の設計評価工数の軽減が可能
3. 軽負荷時及び無負荷時の大幅な低消費電力化が可能
4. ワールドワイド入力及びPFC出力電圧対応
5. タムラ独自の構造により、軽負荷時のうなり音を大幅低減

1. Easy to design compact AC/DC due to small number of external components
2. Potential design evaluation time savings; EMC, open/short circuit testing, & etc.
3. Enables significant reduction in power consumption of no-load and light load
4. Corresponding world wide input and PFC output voltage
5. Unique Tamura design insures significant reduction in 'buzz' under light-load conditions for lower noise level



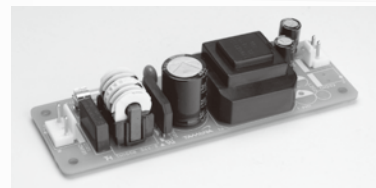
製品ラインアップ/Line-up

SPM



Part No	Input voltage	Output voltage	Rated load	Output tolerance	RoHS	Status
SPM0307SJ	DC110~420V (AC85~276V&PFC)	3.3V	0.7A	±5%	OK	development
SPM0507SJ		5V	0.66A		OK	sample
SPM1203SJ		12V	0.28A		OK	sample
SPM1502SJ		15V	0.24A		OK	sample
SPM2402SJ		24V	0.15A		OK	development

EPM



Part No	Input voltage	Output voltage	Rated load	Output tolerance	RoHS対応	Status
EPM0310SJ	DC110~420V (AC85~276V&PFC)	3.3V	1A	±5%	OK	mass production
EPM0510SJ		5V	1A		OK	mass production
EPM1205SJ		12V	0.5A		OK	mass production
EPM1210SJ			1A		OK	mass production
EPM1505SJ		15V	0.5A		OK	sample
EPM1510SJ			1A		OK	mass production
EPM2405SJ		24V	0.5A		OK	mass production

お問い合わせ
Inquiries

株式会社タムラ製作所 電子部品事業本部 営業本部
〒350-0214 埼玉県坂戸市千代田5-5-30 TEL.049-284-2323 FAX.049-284-6033
TAMURA CORPORATION Electronic Components Business Sector 5-5-30 Chiyoda Sakado-shi Saitama 350-0214 Japan

超低待機電力型電源モジュール

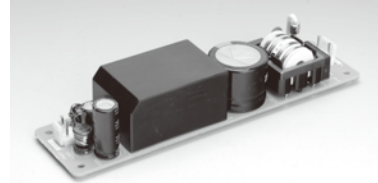
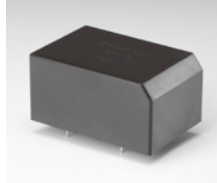
SPM、EPM、BPMシリーズ



Power Supplies with Ultra-low Standby Power Consumption/Energy-saving Power Modules
SPM,EPM,BPM Series

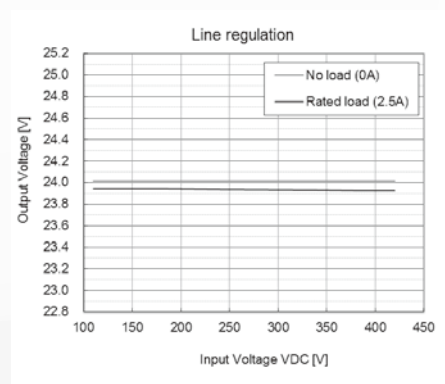
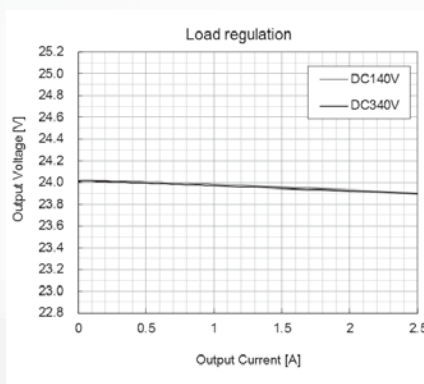
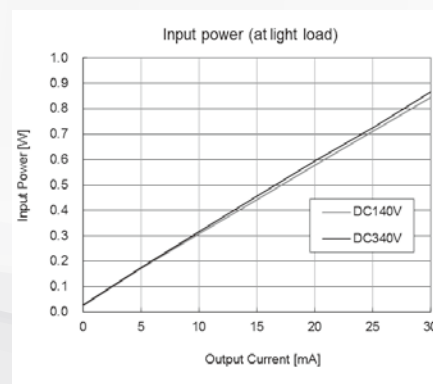
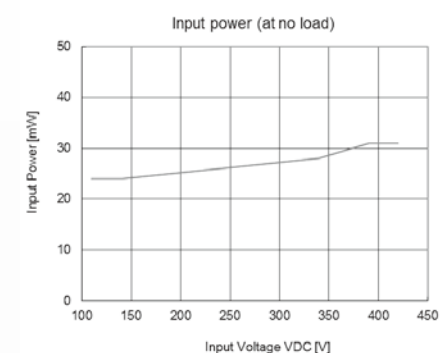
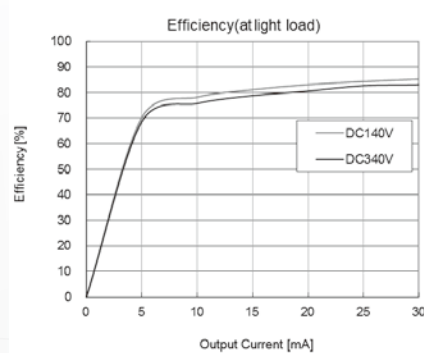
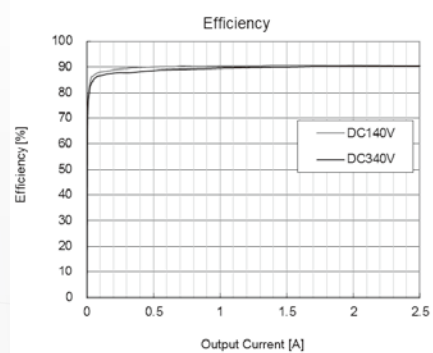
製品ラインアップ/Line-up

BPM



Part No	Input voltage	Output voltage	Rated load	Output tolerance	RoHS	Status
BPM0390SJ	DC110~420V (AC85~276V&PFC)	3.3V	9A	±5%	OK	development
BPM0580SJ		5V	8A		OK	development
BPM1234SJ		12V	3.4A		OK	development
BPM1527SJ		15V	2.7A		OK	development
BPM2417SJ		24V	1.7A		OK	sample

代表特性(BPM2417SJ)/Example



お問い合わせ
Inquiries

株式会社タムラ製作所 電子部品事業本部 営業本部
〒350-0214 埼玉県坂戸市千代田5-5-30 TEL.049-284-2323 FAX.049-284-6033
TAMURA CORPORATION Electronic Components Business Sector 5-5-30 Chiyoda Sakado-shi Saitama 350-0214 Japan