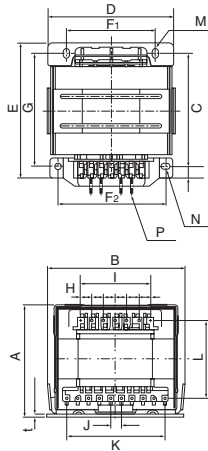
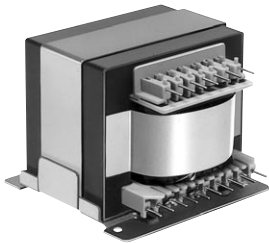


電源トランス
Power Transformers

PEAY SERIES

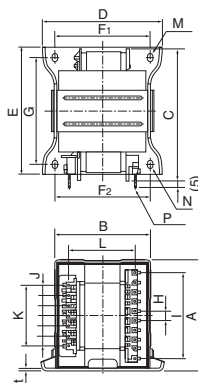
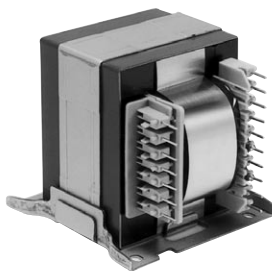
UL B種対応可能
Compatible with UL B type



カタログ品番 Catalog No	標準出力 Standard Output VA	MAX A	MAX B	±1 C	±1 D	±1 E	±1 F1	±1 F2	±1 G	1次側 PRI		2次側 SEC		±1 L	±0.3 M	±0.3 N	P	t	ピン数 Qty of pin PRI-SEC	参考質量 Weight approx. (kg)
										±0.5 H	±1 I	±0.5 J	±1 K							
PEAY76-50	105	74	88	86.5	88	94.5	62	76	79	7.5	45	7	63	50	4.5×6.5	4.5	1.2	1.6	7-10	2.1
PEAY76-55	115	74	88	91.5	88	94.5	62	76	79	7.5	45	7	63	50	4.5×6.5	4.5	1.2	1.6	7-10	2.5
PEAY76-60	125	74	88	96.5	88	94.5	62	76	79	7.5	45	7	63	50	4.5×6.5	4.5	1.2	1.6	7-10	2.8
PEAY76-65	135	74	88	101.5	88	94.5	62	76	79	7.5	45	7	63	50	4.5×6.5	4.5	1.2	1.6	7-10	3.1
PEAY85-47	140	82	98	87	94	92.3	71	82	72	7.5	45	7.5	67.5	55	4.5×6.5	4.5	1.2	1.6	7-10	2.7
PEAY85-50	150	82	98	90	94	92.5	71	82	72	7.5	45	7.5	67.5	55	4.5×6.5	4.5	1.2	1.6	7-10	2.8
PEAY85-52	155	82	98	92	94	92.5	71	82	72	7.5	45	7.5	67.5	57	4.5×6.5	4.5	1.2	1.6	7-10	2.9
PEAY85-57	170	82	98	97	94	92.5	71	82	72	7.5	45	7.5	67.5	57	4.5×6.5	4.5	1.2	1.6	7-10	3.1
PEAY85-58	180	82	98	98	94	92.5	71	82	72	7.5	45	7.5	67.5	55	4.5×6.5	4.5	1.2	1.6	7-10	3.1
PEAY85-65	197	82	98	105	94	106	71	82	91	7.5	45	7.5	67.5	55	4.5×6.5	4.5	1.2	1.6	7-10	3.5
PEAY96-60	233	89	110	106	104	94	81	92	79	7.5	45	7.5	82.5	59.8	4.5×6.5	4.5	1.2	1.6	7-12	4.1
PEAY96-70	270	89	110	116	104	104	81	92	89	7.5	45	7.5	82.5	59.8	4.5×6.5	4.5	1.2	1.6	7-12	4.8
PEAY96-75	290	89	110	121	104	109	81	92	94	7.5	45	7.5	82.5	59.8	4.5×6.5	4.5	1.2	1.6	7-12	5.1

PEAT SERIES

UL B種対応可能
Compatible with UL B type



カタログ品番 Catalog No	標準出力 Standard Output VA	MAX A	MAX B	±1 C	±1 D	±1 E	±1 F1	±1 F2	±1 G	1次側 PRI		2次側 SEC		±1 L	±0.3 M	±0.3 N	P	t	ピン数 Qty of pin PRI-SEC	参考質量 Weight approx. (kg)
										±0.5 H	±1 I	±0.5 J	±1 K							
PEAT76-50	105	84	75	86.5	90	95	72	72	79	7.5	45	7	63	50	4.5×6.5	4.5×6.5	1.2	1.6	7-10	2.1
PEAT76-55	115	84	75	91.5	90	95	72	72	79	7.5	45	7	63	50	4.5×6.5	4.5×6.5	1.2	1.6	7-10	2.5
PEAT76-60	125	84	75	96.5	90	95	72	72	79	7.5	45	7	63	50	4.5×6.5	4.5×6.5	1.2	1.6	7-10	2.8
PEAT76-65	135	84	75	101.5	90	95	72	72	79	7.5	45	7	63	50	4.5×6.5	4.5×6.5	1.2	1.6	7-10	3.1
PEAT85-47	140	95	84	87	97	94	72	72	79	7.5	45	7.5	67.5	57	4.5	4.5×6.5	1.2	1.6	7-10	2.7
PEAT85-50	150	95	84	90	97	94	72	72	79	7.5	45	7.5	67.5	55	4.5	4.5×6.5	1.2	1.6	7-10	2.8
PEAT85-58	180	95	84	98	97	94	72	72	79	7.5	45	7.5	67.5	55	4.5	4.5×6.5	1.2	1.6	7-10	3.1
PEAT85-65	197	95	84	105	97	106	72	72	91	7.5	45	7.5	67.5	55	4.5	4.5×6.5	1.2	1.6	7-10	3.5
PEAT96-60	233	105	92	106	102	94	77	77	79	7.5	45	7.5	82.5	59.8	4.5	4.5×6.5	1.2	1.6	7-12	4.1
PEAT96-70	270	105	92	116	102	104	77	77	89	7.5	45	7.5	82.5	59.8	4.5	4.5×7.5	1.2	1.6	7-12	4.8
PEAT96-75	290	105	92	121	102	109	77	77	94	7.5	45	7.5	82.5	59.8	4.5	4.5×7.5	1.2	1.6	7-12	5.1